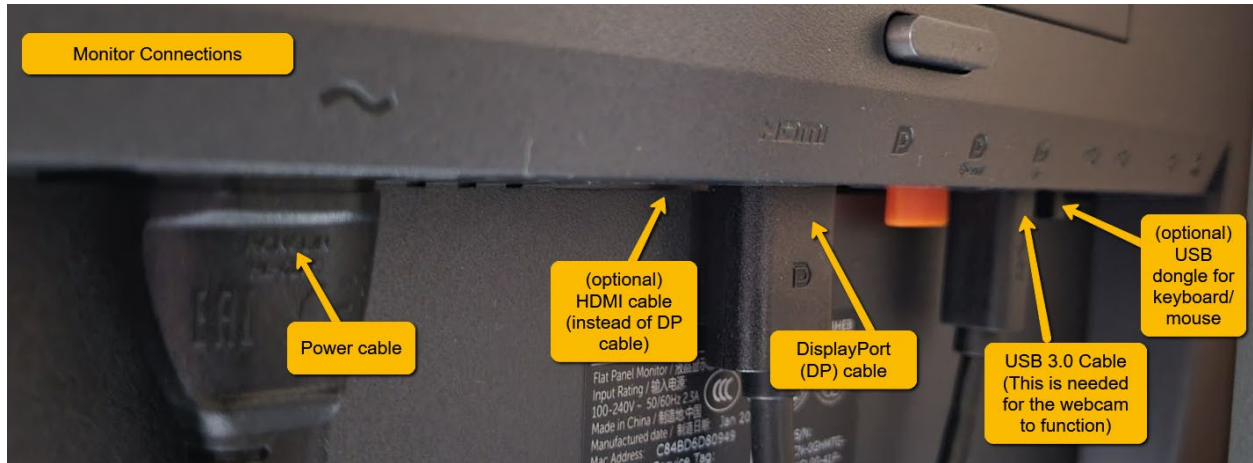


Dell P2424HEB Web Conferencing Monitor

Manuals: <https://www.dell.com/support/home/en-us/product-support/product/p2424heb-monitor/docs>

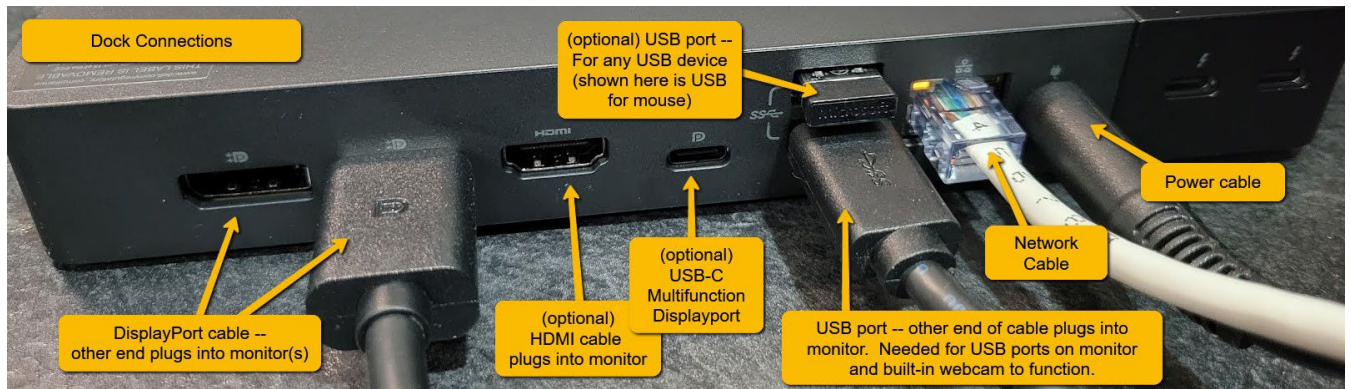
User Guide (PDF): <https://dl.dell.com/content/manual30229939-dell-p2424heb-video-conferencing-monitor-user-s-guide.pdf?language=en-us>



Option 1: Connect monitor to docking station

Cables (4): power cable, DP (preferred) or HDMI cable, USB 3.0 type B cable for monitor, network cable

Optional: USB dongle for keyboard/mouse or other USB devices



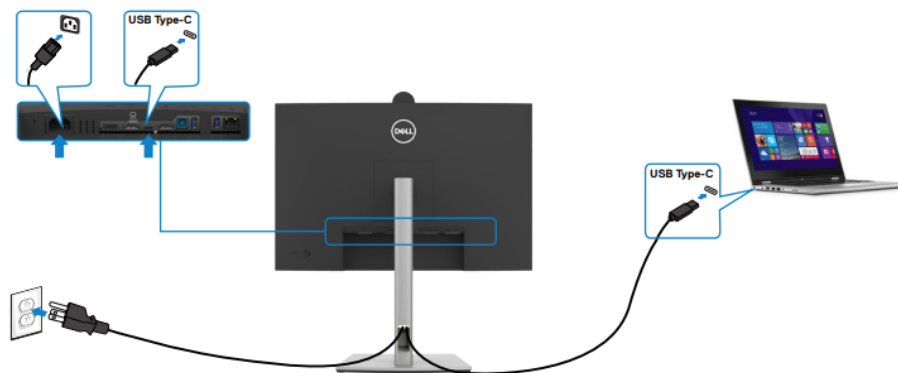
Please note: Each docking station model is slightly different.

Pictured is:

1. **DisplayPort** (DP) cable connection to monitor (preferred), but an HDMI cable can be used instead.
2. **USB 3.0** cable to monitor, which always the webcam to function on the monitor
3. **Network** cable (for a faster, more stable connection, instead of wi-fi from laptop)
4. **Power** cable for docking station
5. **USB dongle** plugged in for keyboard/mouse so it does not have to be plugged into laptop

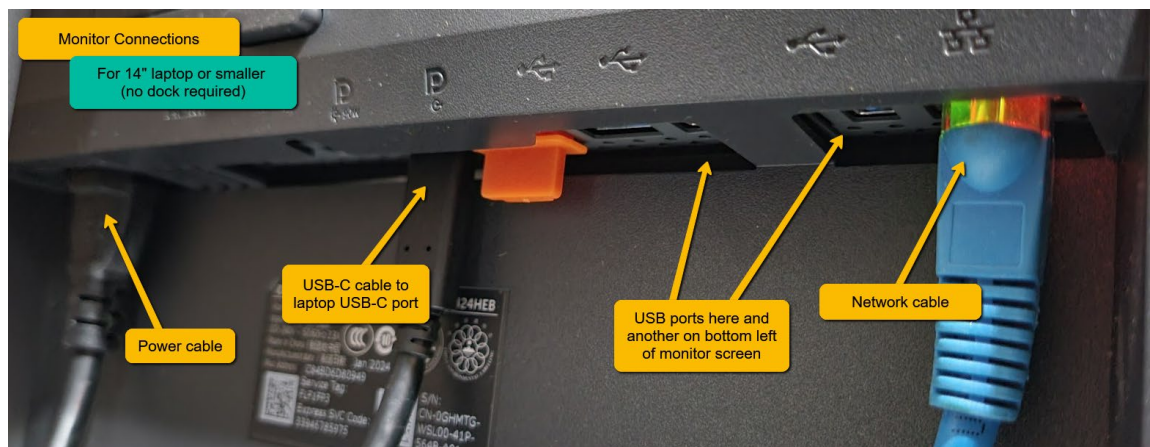
Option 2: Connect monitor directly to laptop (*no docking station*)

For small sized laptops (14" or less) – no docking station is required.



The USB Type-C port on your monitor:

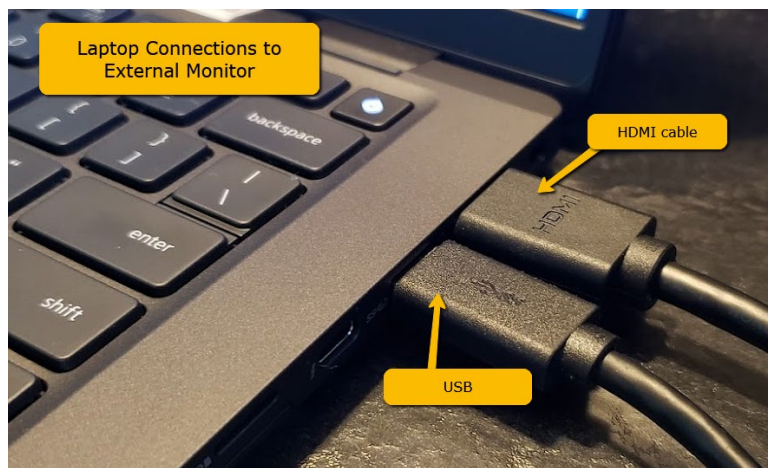
- Can be used as USB Type-C, DisplayPort 1.2 alternatively.
- Supports USB Power Delivery (PD), with profiles up to 90 W.



For larger laptops (15" or more) – The above direct connection is NOT RECOMMENDED.

USB-C cable may NOT provide enough power and could potentially damage your laptop.

Cables needed (3): power cable, HDMI cable, USB 3.0 Type B cable



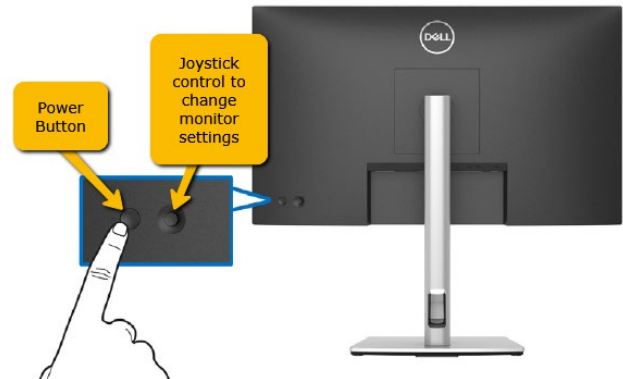
Monitor Settings

Power On the Monitor

Press the Power Button, located on the back of the monitor, to turn on the monitor.

First time setup:

1. Press power button to turn monitor on.
2. Straight press in on joystick button.
3. Select Language: Straight press in on joystick button to select English.
4. USB-C charging: Straight press in on joystick button to select Yes.
5. Connect 2 PCs to monitor: Press down on joystick to select No and press straight in to confirm.



Using the Joystick Control for monitor menu:

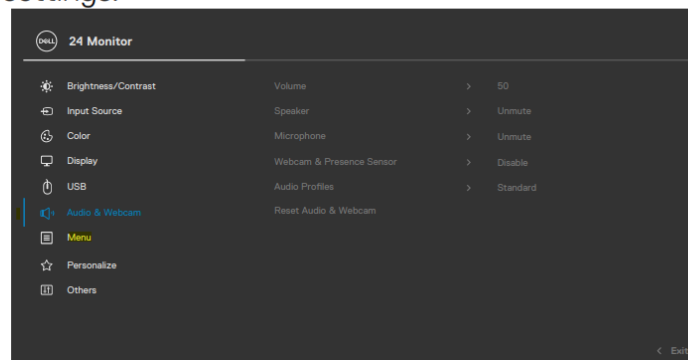
To modify the settings, use the joystick control on the rear end of the monitor, do the following:

- Press the joystick button to launch the menu.
- Move the joystick **up/down/left/right** to toggle between the OSD menu options.



Audio & Webcam

Use the Audio Settings **menu** to adjust the audio settings.

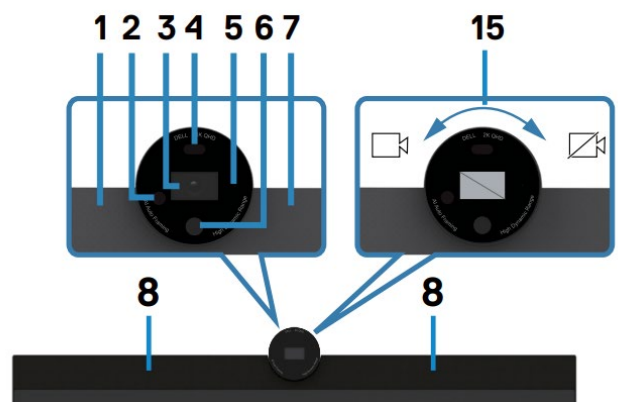


Webcam Operation

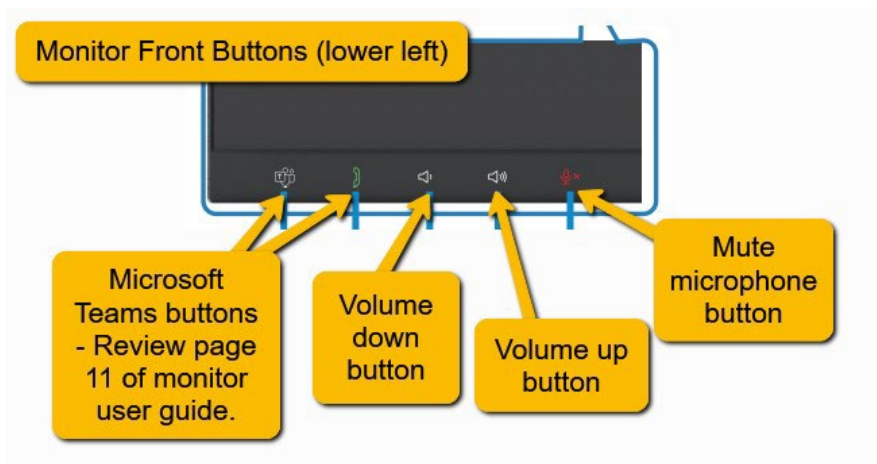
Camera Shutter (for privacy)

- Rotate **counterclockwise** to **open** camera shutter.
- Rotate **clockwise** to **close** camera shutter.
When closed, the camera will replace the image with a black pattern.

Note: For webcam and microphone to work, both the video cable AND the USB cable from monitor to dock (or directly into laptop) MUST be connected.



Monitor – Teams and Sound Control Buttons



Easy Access USB ports

When you need to plug in USB devices (thumbdrives, headsets, etc.), there are two convenient ports located on the bottom left of the monitor.

One regular USB-Type B port (right), one USB-Type C (left) and there is also a 3.5 audio jack for headphones.

